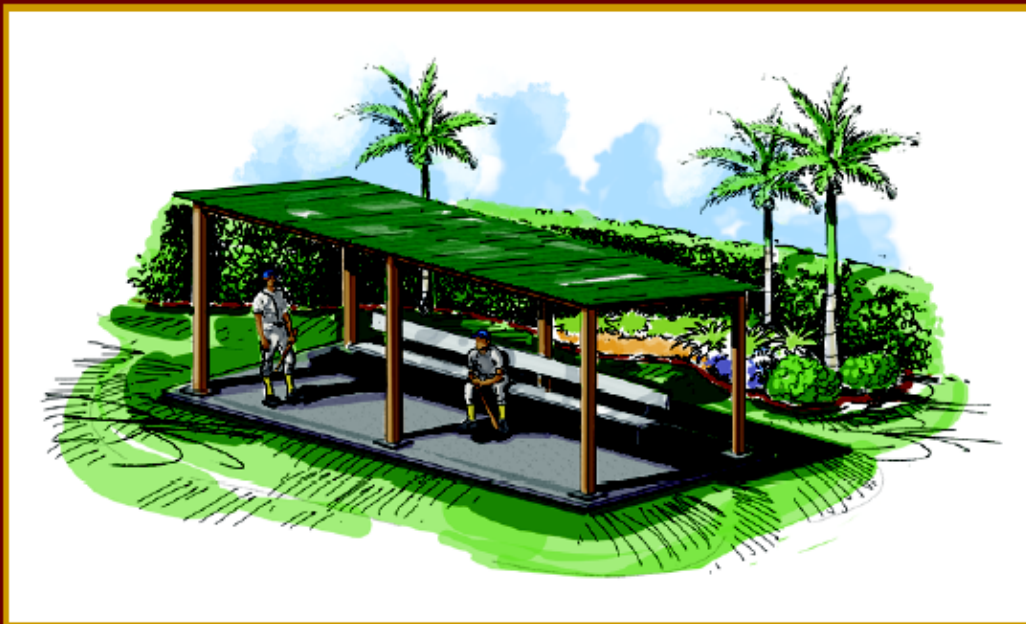


DUGOUTS USA

**National Suppliers of
Prefabricated, Pre Engineered
Dugout Structures**



Dugouts USA

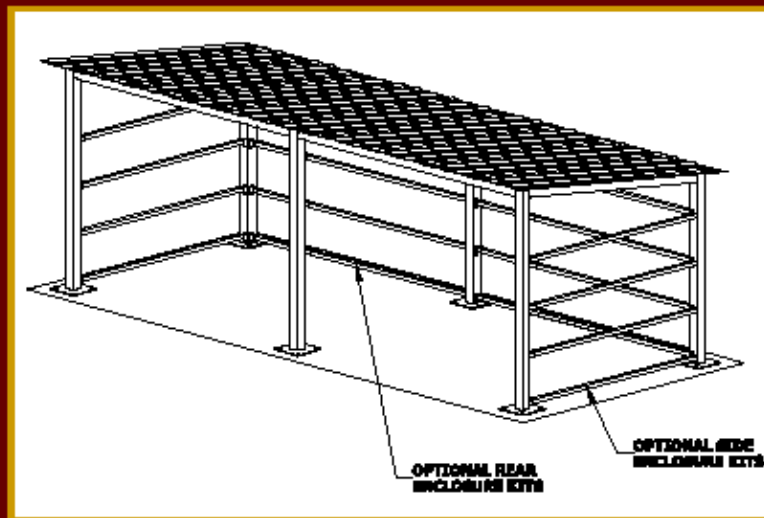
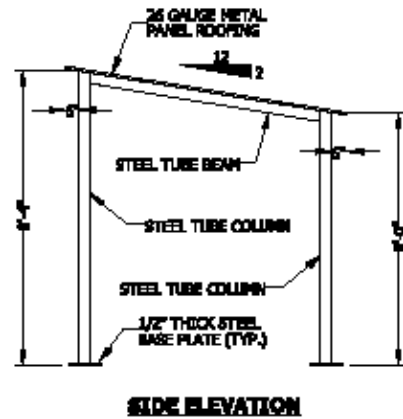
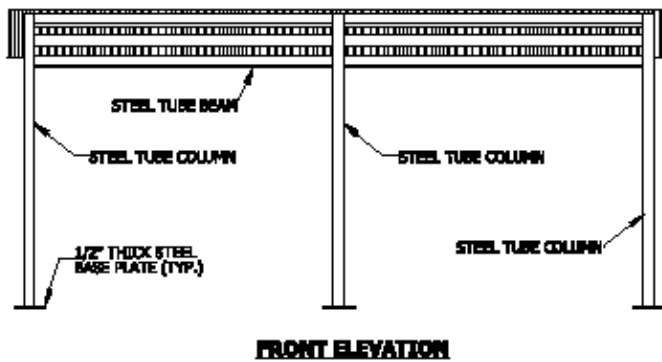
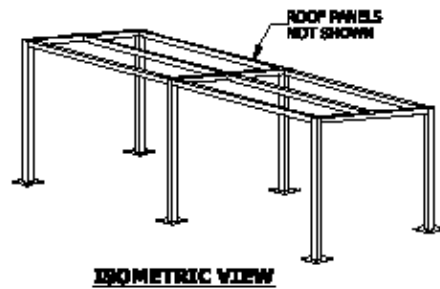
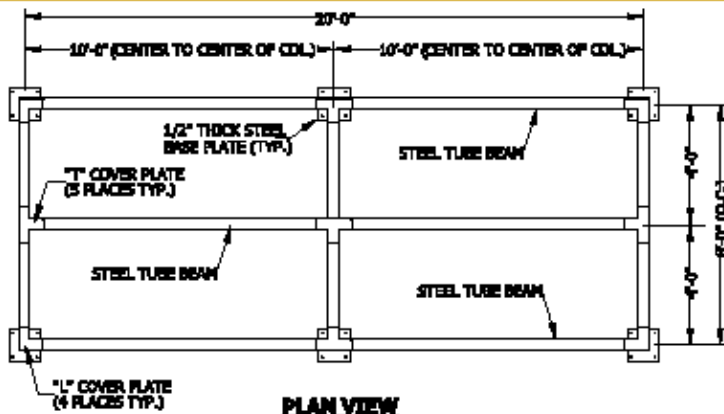
P.O. Box 135575

Clermont, Florida 34713

Ph. 863-420-2605 • Fax 863-424-5032

www.dugoutsusa.com

Typical Drawings



Available Sizes:

ST820 8' x 20'

ST830 8' x 30'

ST840 8' x 40'

ST850 8' x 50'

*Dugouts are designed to be 8' deep
& unlimited in length in 10' sections

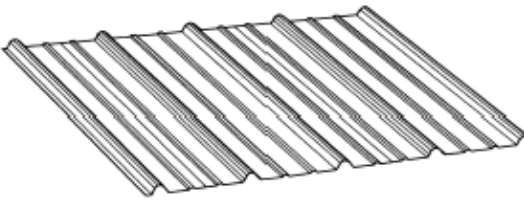
Dugout Features

- All Steel Construction
- Concealed Frame Fasteners
- Expandable in 10 Foot Sections
- Fast Erection with Limited Personnel
- 40 Year Warranty on Metal Roof Color Finish

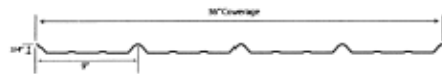
Powder Coated Steel Frame Colors*

Almond	Black	Red
Green	Burgundy	Blue
Yellow	Brown	Forest Green


26 Gauge Metal Roof Colors*



Profile Detail



Sidelap Detail



Light Stone	Mocha Tan	Old Town Gray
Reflective White	Cocoa Brown	Forest Green
Hawaiian Blue	Barn Red	Galvalume

*Actual colors may vary

Specifications

STEEL DUGOUT FRAME

- Support columns shall be fabricated of A500 square structural steel tubing with an electrically welded ½" thick A36 steel base plate.
- Beams shall be fabricated of A500 square structural steel tubing.
- Steel frame members shall be blasted to near white metal, cleaned with an 8-Stage pretreatment system, and zinc rich primer coated prior to the finished powder coat process. Powder coat finish shall be TGIC electrostatically applied polyester powder.
- Roofing shall be precut 26 gauge small rib metal panels.
- Fasteners shall be 1" diameter grade 5 bolts with flat washers and locknuts. Bolts meet ASME B18.2.1 with a minimum tensile strength of 120,000 psi. All fasteners shall be concealed inside the tubing.
- Anchors shall be ½" diameter x 8 ½" zinc plated concrete wedge anchors.
- Overall dimensions are 8' x 20' with an eave height of 8' and 2:12 roof pitch.

OPTIONAL ENCLOSURE FRAME

- Enclosure frame shall be fabricated of A500 square structural steel tubes (4 per opening) spaced 24" on center.
- Enclosure frame shall be finished to match dugout frame.

METAL ROOF PANELS

- Panel Profile: 3/4" height rib 36" coverage width
- Panel Style: Sidelap seam or exposed fastener
- Gauge: 26 Gauge
- Substrate: Grade 80 Galvanized steel sheet (G60), conforming to ASTM A446 for painted panels
- Texture: Smooth
- Finish: Semcoat Superl Siliconized polyester (40 year warranty)
- Color: Selected from manufacturers standard line.

WARRANTY

Dugouts shall be guaranteed against defects in workmanship or materials for a period of one year from date of invoice by the manufacturer.

DISTRIBUTED BY:

Sports & Recreation Associates
1950 Shady Plain Rd
Apollo, PA 15613
Phone: 724-478-1775
Fax: 724-478-1785
Toll Free: 877-478-1775